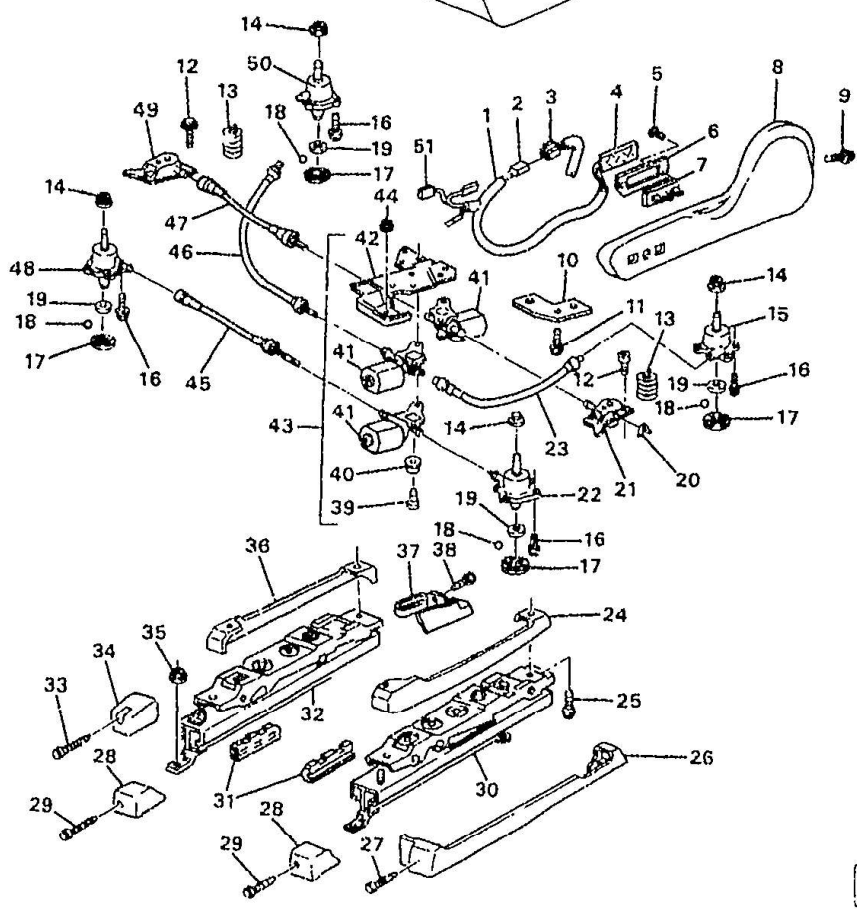


MF11-012
081092



MF11-012

1993-1994 F ADJUSTER ASM/SEAT POWER 6-WAY(AC3)
1995-2002 F ADJUSTER ASM/SEAT POWER 6-WAY(AG1)

1.	9-N19	13.090	HARNESS, D/SEAT ADJR WRG (INCLS 2, 4, 51)	93-94 F (AC3, AR9)	1	12121383
	9-N19	13.090	HARNESS, D/SEAT ADJR WRG (INCLS 2, 4, 51)	95-97 F (AG1, AR9)	1	12121383

38.		8.977	SCREW, OVAL CSK TRIM HD W/WA TYPE AB (4.2X1.4X20) (D/SEAT INR ADJR LWR) (16.682)	93-02		1	12338093
39.	9-C20	11.561	SPACER, D/SEAT ADJR ACTR MOT (PART OF 41, 43)	93-94	F (AC3)	3	20536328
	9-C20	11.561	SPACER, D/SEAT ADJR ACTR MOT (PART OF 41, 43)	95-02	F (AG1)	3	20536328
40.	9-C18	11.556	INSULATOR, D/SEAT ADJR ACTR MOT (PART OF 41, 43)	93-94	F (AC3)	3	20536327
	9-C18	11.556	INSULATOR, D/SEAT ADJR ACTR MOT (PART OF 41, 43)	95-02	F (AG1)	3	20536327
41.	9-C18	11.556	MOTOR, D/SEAT ADJR ACTR (INCLS 39, 40) (PART OF 43) (ITT AUTO ELEC) (AC-DELCO #22138358)	93-02	F	3	22138358
	9-C18	11.556	MOTOR, D/SEAT ADJR ACTR (PART OF 43) (LEAR) (6-WAY ELEC KEYANG MTR-ROUND HSG) (AC-DELCO #16606971)	93-02	F	3	16606971
42.	9-C18	11.556	BRACKET, D/SEAT ADJR ACTR (PART OF 43) (MTR SUPT)	93-94	F (AC3, AR9)	1	20651090
	9-C18	11.556	BRACKET, D/SEAT ADJR ACTR (PART OF 43) (MTR SUPT)	95-02	F (AG1, AR9)	1	20651090
43.	9-C18	11.556	ACTUATOR, D/SEAT ADJR (INCLS 39-42) (AC-DELCO #16739533)	94	F (AC3, AR9)	1	16739533
	9-C18	11.556	ACTUATOR, D/SEAT ADJR (INCLS 39-42) (AC-DELCO #16739533)	95-02	F (AG1, AR9)	1	16739533
	9-C18	11.556	ACTUATOR, D/SEAT ADJR (INCLS 39-42) (AC-DELCO #16739533)	98-02	F (AG1, AQ9)	1	16739533
	9-C18	11.556	ACTUATOR, D/SEAT ADJR (OPTIONAL ADJUSTER) (INCLS 39-42) (KEYANG MTR-ROUND HSG, WITH MOTOR & SUPPORT) (AC-DELCO #16607941)	93-94	F (AC3, AR9)	1	16607941
	9-C18	11.556	ACTUATOR, D/SEAT ADJR (OPTIONAL ADJUSTER) (INCLS 39-42) (KEYANG MTR-ROUND HSG, WITH MOTOR & SUPPORT) (AC-DELCO #16607941)	95-99	F (AG1, AR9)	1	16607941
	9-C18	11.556	ACTUATOR, D/SEAT ADJR (OPTIONAL ADJUSTER) (INCLS 39-42) (KEYANG MTR-ROUND HSG, WITH MOTOR & SUPPORT) (AC-DELCO #16607941)	98-99	F (AG1, AQ9)	1	16607941
44.		8.917	NUT, HFH, M8X1.25, 17.9 OD, 738 THK, 13MM HEX, 10, ZF (D/SEAT ACTR TO ADJ) (8.915) (AC-DELCO #11514596)	93-02		1	11514596
45.	9-C20	11.561	CABLE, D/SEAT VERT ADJR (INR FRT) (YELLOW) (290.0MM)	93-94	F (AC3)	1	20489051
	9-C20	11.561	CABLE, D/SEAT VERT ADJR (INR FRT) (YELLOW) (290.0MM)	95-02	F (AG1)	1	20489051
46.	9-C20	11.561	CABLE, D/SEAT VERT ADJR (INR RR) (BROWN) (411.0MM)	93-94	F (AC3)	RH	20651135

Motor
Only

Complete
Assembly

	9-C20	11.561	CABLE, D/SEAT VERT ADJR (INR RR) (BROWN) (411.0MM) . . .	95-02	F (AG1)	RH	20651135
47.	9-C20	11.561	CABLE, D/SEAT HORIZ ADJR (YELLOW) (290.0MM)	93-94	F (AC3)	1	20489051
	9-C20	11.561	CABLE, D/SEAT HORIZ ADJR (YELLOW) (290.0MM)	95-02	F (AG1)	1	20489051
48.	9-C18	11.556	ACTUATOR, D/SEAT INR ADJR FRT VERT (INCLS 14) (PART OF 32)	93-94	F (AC3, AR9)	1	16807200
	9-C18	11.556	ACTUATOR, D/SEAT INR ADJR FRT VERT (INCLS 14) (PART OF 32)	95-96	F (AG1, AR9)	1	16807200
	9-C18	11.556	ACTUATOR, D/SEAT INR ADJR FRT VERT (INCLS 14, 17, 18, 19) .	97	F (AG1, AR9)	1	16807200
	9-C18	11.556	ACTUATOR, D/SEAT INR ADJR FRT VERT (INCLS 14, 17, 18, 19) .	98-02	F (AG1, AR9, AQ9)	1	16807200
49.	N.S.		ACTUATOR, D/SEAT INR ADJR HORIZ (PART OF 32)				
50.	9-C18	11.556	ACTUATOR, D/SEAT INR ADJR RR VERT (INCLS 14) (PART OF 32)	93-94	F (AC3, AR9)	1	16807202
	9-C18	11.556	ACTUATOR, D/SEAT INR ADJR RR VERT (INCLS 14) (PART OF 32)	95-02	F (AG1, AR9)	1	16807202
	9-C18	11.556	ACTUATOR, D/SEAT INR ADJR RR VERT (INCLS 14) (PART OF 32)	98-02	F (AG1, AQ9)	1	16807202
	9-C18	11.556	ACTUATOR, D/SEAT INR ADJR RR VERT (INCLS 14) (PART OF 32)	02	F (AG1, AQ9, AR9)	1	16807203
51.	9-C18	11.556	CONNECTOR, MOT-ST VERT ADJR ACTR (FRT) (D/SEAT (PART OF 1)) (2-WAY F W/LEADS) (2.535) (AC--DELCO #PT212)	93-02	F	1	12101820
	9-C18	11.556	CONNECTOR, MOT-ST VERT ADJR ACTR (RR) (D/SEAT (PART OF 1)) (BLUE) (2-WAY F W/LEADS) (AC--DELCO #PT398)	93-02	F	1	12102769

RPO DEFINITIONS

AC3 - ADJUSTER, SEAT, 6-WAY POWER, BUCKET, DRIVER
AG1 - ADJUSTER, SEAT, 6-WAY POWER, DRIVER (60-40) (VAR 2)
AQ9 - SEAT, FRONT BUCKET, DRIVER, PASSENGER, RECLINING
AR9 - SEAT, FRONT BUCKET, DRIVER, PASSENGER, MANUAL RECLINING (EUROPEAN STYLE)
10C - TRIM COMBINATION CLOTH, ARCTIC WHITE (97)
102 - TRIM COMBINATION LEATHER, ARCTIC WHITE (2) (94)
103 - TRIM COMBINATION - LEATHER, ARCTIC WHITE
12B - TRIM COMBINATION CLOTH, GRAPHITE (B) (92)
12C - TRIM COMBINATION CLOTH, GRAPHITE (C) (92)
122 - TRIM COMBINATION LEATHER, GRAPHITE
14B - TRIM COMBINATION - CLOTH, DK GRAY
14D - TRIM COMBINATION CLOTH, LT GRAY
142 - TRIM COMBINATION LEATHER, LT GRAY
52B - TRIM COMBINATION CLOTH, LT NEUTRAL
52D - TRIM COMBINATION CLOTH, NEUTRAL
522 - TRIM COMBINATION - LEATHER, NEUTRAL
64B - TRIM COMBINATION CLOTH, LT BEIGE
642 - TRIM COMBINATION LEATHER, LT BEIGE